



# VELscope®

THE ORAL CANCER SCREENING SYSTEM

*Without VELscope neither I, the oral surgeon, nor the head and neck surgeon could visualize the lesion...  
VELscope literally saved the patient's life.*

*Dr. A Palombaro, Binghamton, NY*

## GET IT EARLY. GET IT ALL.™

### ORAL CANCER KILLS ONE PERSON EVERY HOUR, 24 HOURS A DAY IN NORTH AMERICA

- The incidence of oral cancer **will increase 11%** in the United States in 2007
- Unlike several other cancers, the **survival rate** for oral cancer has remained **unchanged for decades**
- The overall 5-year **survival rate** for oral cancer is **52%**, but when discovered **early**, it increases to **80% - 90%**
- Unfortunately, **only 35%** of oral cancer cases are diagnosed in the **early stages**. **Why?** Because there have been few advances made in screening techniques and there are significant limitations inherent to white light and chemiluminescence light examination of the oral mucosa
- Pre-malignant changes actually start below the surface, at the basement membrane. These changes may not be apparent to the naked eye until the disease progresses to the surface

### New FDA 510(k) Clearance & Health Canada Approval

VELscope is intended to be used by a dentist or health-care provider as an adjunct to traditional oral examination by incandescent light to enhance the visualization of oral mucosal abnormalities that may not be apparent or visible to the naked eye, such as oral cancer or pre-malignant dysplasia. VELscope is further intended to be used by a surgeon to help identify diseased tissue around a clinically apparent lesion and thus aid in determining the appropriate margin for surgical excision.

### FLUORESCENCE VISUALIZATION TECHNOLOGY

#### A new tool for oral mucosal examination

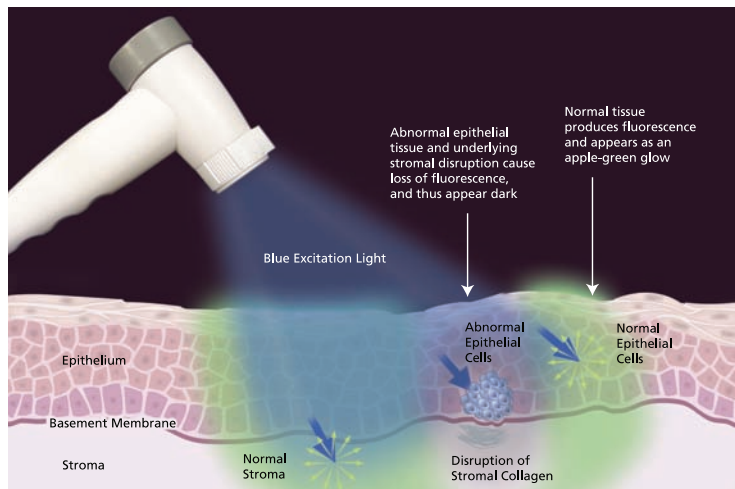
VELscope® is a revolutionary hand-held device that provides dentists and hygienists with an easy-to-use adjunctive mucosal examination system for the early detection of abnormal tissue.



The patented VELscope technology platform was developed in collaboration with the British Columbia Cancer Agency and MD Anderson Cancer Center, with funding provided in part by the NIH. It is based on the **direct visualization of tissue fluorescence** and the changes in fluorescence that occur when abnormalities are present.

The VELscope Handpiece emits a safe blue light into the oral cavity, which **excites** the tissue from the surface of the epithelium through to the **basement membrane** and into the **stroma** beneath, causing it to fluoresce. The clinician is then able to immediately view the different **fluorescence** responses to help **differentiate between normal and abnormal tissue**. In fact, **VELscope is the only non-invasive adjunctive device clinically proven to help discover occult oral disease**.

Under VELscope examination, abnormal tissue typically appears as irregular, dark areas that stand out against the otherwise normal, green fluorescence pattern of surrounding healthy tissue.



# VELscope®

THE ORAL CANCER SCREENING SYSTEM



SINGLE OUT SUSPICIOUS TISSUE...  
EARLY DISCOVERY CAN SAVE LIVES

## SYSTEM FEATURES:

- Painless, non-invasive, with no rinses or stains required
- The **VELscope** examination takes only one or two minutes and is easy to incorporate into your workflow
- **Camera Adapter** allows for photodocumentation and tracking of lesions
- **Flexible positioning:** space-saving vertical or low-profile horizontal orientation... your choice
- Disposable **VELsheath/Barrier** ensures asepsis
- Disposable anti-fog **VELcap** helps maintain **asepsis** and **protects** the Handpiece special filtering optics
- Convenient disposable **VELtractor** assists clinician as a "third hand" during the examination and also serves as a **measuring guide**

VELSCOPE PROVIDES IMMEDIATE  
BENEFITS FOR THE PATIENT,  
CLINICIAN AND PRACTICE

**VELscope** combines minimal per-patient costs with more effective screening. The investment for **VELscope** can be quickly recouped, yielding a substantial earning potential for the practice.

Through the **CDT code D0431\***, an increasing number of insurance companies are recognizing **VELscope** as an adjunctive screening device.

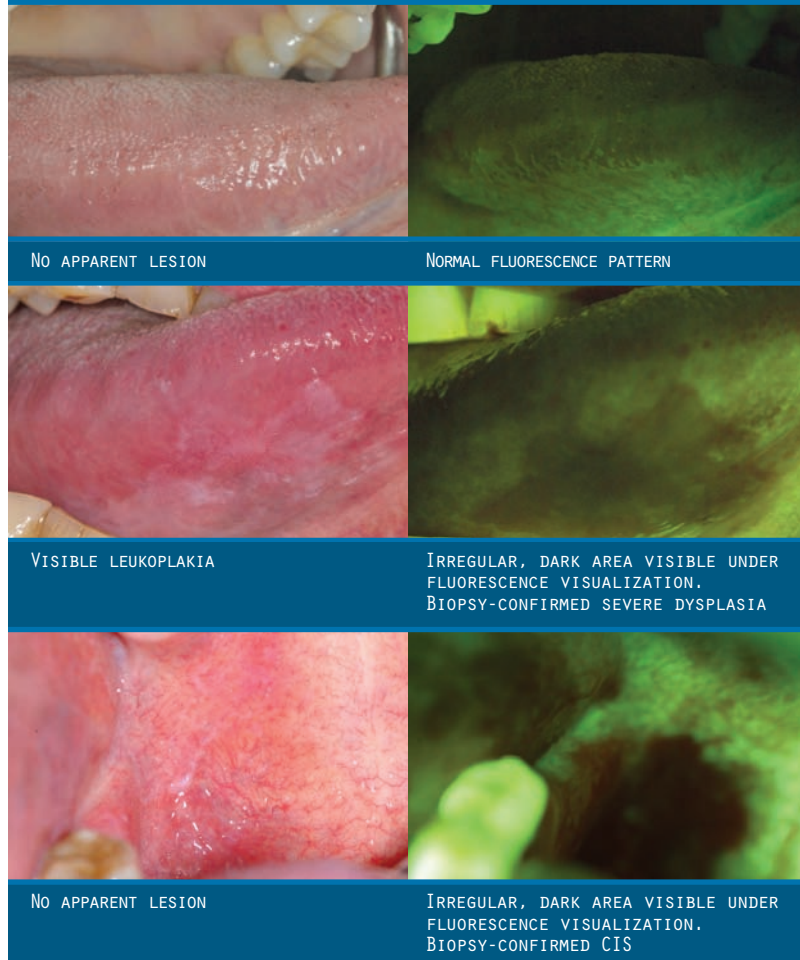
\* U.S. only. Code will vary for other countries.



Adding **VELscope** to our diagnostic protocol... has resulted in detection of dangerous lesions that would have otherwise been undetected.

*Dr. E Truelove, Seattle, WA*

EXAMPLES OF DIRECT VISUALIZATION UNDER  
BOTH WHITE LIGHT AND VELSCOPE EXAMINATION



IMAGES COURTESY OF THE BRITISH COLUMBIA ORAL CANCER PREVENTION PROGRAM

FOR FURTHER INFORMATION ABOUT VELSCOPE  
AND LED DENTAL INC., PLEASE VISIT OUR  
WEBSITE AT [WWW.VELSCOPE.COM](http://WWW.VELSCOPE.COM)



LED DENTAL INC.  
201-15047 MARINE DRIVE WHITE ROCK BC CANADA V4B 1C5  
TEL 1-888-541-4614 FAX 604-541-4613 [WWW.VELSCOPE.COM](http://WWW.VELSCOPE.COM)